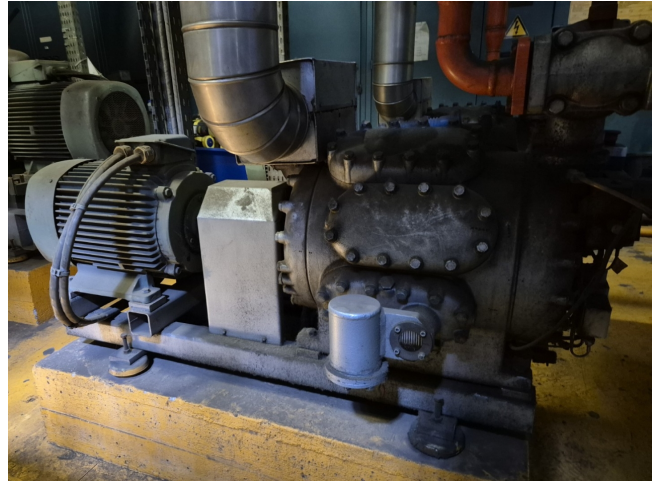


Sabroe CMO 18

Specifications

| | |
|---------------------------------------|--------------------------|
| Marque | Sabroe |
| Le type | CMO 18 |
| Réfrigérant | Freon |
| kW at -5°C/+40°C | 94,5 |
| kW at -10°C/+40°C | 74,0 |
| kW at -20°C/+40°C | 42,4 |
| kW at -30°C/+40°C | 20,7 |
| Électromoteur Specs | 50 Hz - 30 kW - 1460 RPM |
| Contrôle de capacité | ✓ |
| Sur le châssis en acier | ✓ |
| Interrupteurs de sécurité de pression | ✓ |
| Manomètres | ✓ |
| Voyant | ✓ |
| m ³ / h | 150 |
| Stock | 1 |



Description

Used Sabroe CMO 18

Used Sabroe CMO 18 reciprocating compressor on Freon. Complete with 1 VEB KMER 200 L4 - 50 Hz - 30 kW - 1460 RPM, pressure and safety switches/gauges. The compressor has a displacement of 150 m³/h.

*Why choose for HOSBV? Were not only the largest used refrigeration specialist in Europe, but also, we deliver all equipment including an extensive test, warranty and industrial cleaning.

*Optional we can also perform a new paint job and arrange the logistics.

